







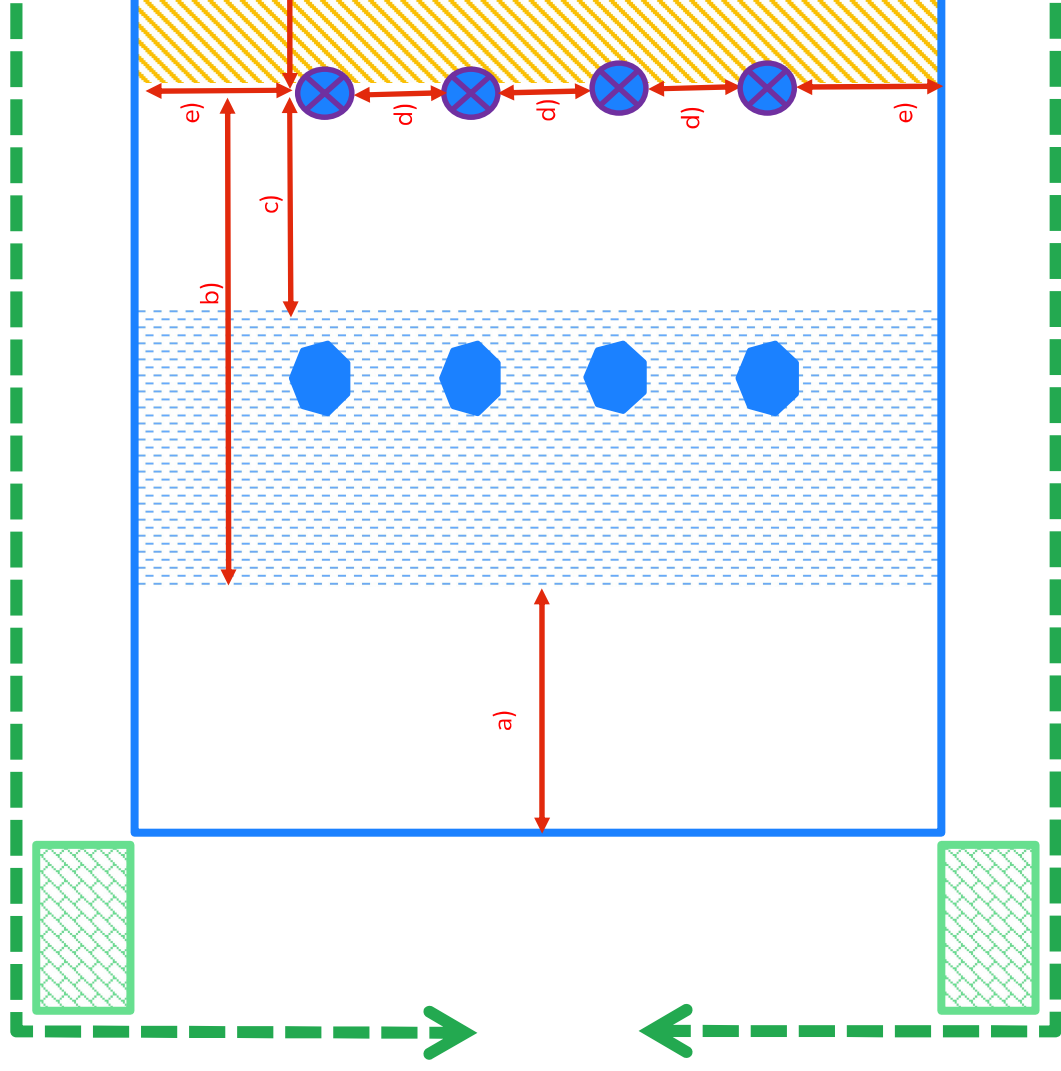


## Safe Tomahawk Throwing for Young People

### Anatomy of a Throwing Range

- a) Event Boundary 
- b) Viewing Area 
- c) Range Boundary 
- d) Throwing Point (3-7m) 
- e) Throwing Lanes (1-4) 
- f) Target 
- g) Overshoot 
- h) Critical Safe Distances 
  - a) 4m - Range approach
  - b) 7m - Max Tomahawk throw line\*
  - c) 3m - Min Tomahawk throw line\*
  - d) 2m - Target separation
  - e) 3m - Separation
  - f) 8m- Overshoot



\* Variation max 7m / min 4m for small Hawk's